

Final details for March 2010 meeting are being put into place and it looks as if we'll once again be on track at South Central. After having to cancel our 2009 meeting, it is doubly important that the 2010 be successful and hopefully well attended. As you know, we were able to get Gail Ruth, a South Central member, to teach both days and she has already sent pictures of the two paintings she will be teaching. They will be challenging, but Gail has been teaching for 14 years and teaches at all skill levels, so everyone will certainly benefit from her expertise.

The workshop fee will remain at \$100.00 and dues are \$20.00, making your total cost \$120.00. We were able to keep the cost down for another year. A registration form appears on another page of this newsletter. As you know, fees **must** be paid prior to the meeting and we'd appreciate it if you would sign up as soon as possible so Carolyn can get the canvasses prepared and also get the other supplies needed for the workshops in place. **So, please....clip out the registration form and send it and a check for your workshop fee to:**

JUNE HEAD
12341 Wingfoot Dr.
Kansas City, Kansas 66109.

We are fortunate to have Gail Ruth as our guest artist for this meeting. She offers all of us a new experience in painting as none of us has ever painted with her before. You can view examples of her paintings on her website: www.gailruthfineart.com. You can also read her biographical information on the TEAM website (www.artteachers.org.) and see some of her paintings posted there as well.

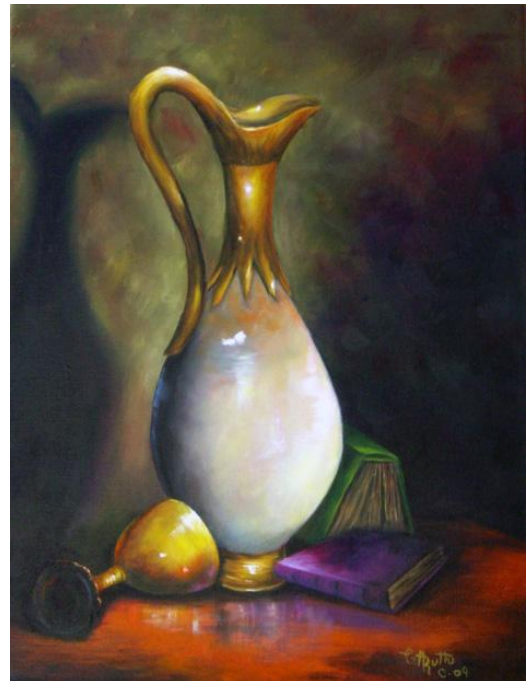


"There are some days when I think I'm going to die from an overdose of satisfaction." (Salvador Dalí)

The two paintings we will be doing are "Mojave" and "The Wine Pitcher". Both paintings will be on a 12x16 canvas. Gail uses the old master's multi-layer technique in her paintings which gives them an old-world appearance.



"Mojave"



"The Wine Pitcher"

A supply list will be printed in an upcoming newsletter. As usual, canvas, paints, and medium will be furnished, so all you will need to bring will be the usual items – paper towels, graphite paper, easel, etc. and whatever brushes Gail requires (list to follow). She will furnish everyone with a complete packet with step by step instructions, color photo and full size pattern.

WE HOPE YOU WILL ALL TRY TO ATTEND THE 2010 SOUTH CENTRAL MEETING IN RICHARDSON, TEXAS ON MARCH 27TH AND 28TH. THE

REGISTRATION FORM IS IN THE NEXT COLUMN. IF YOU ALREADY KNOW YOU WILL BE ATTENDING, PLEASE GO AHEAD AND SEND IT IN WITH YOUR CHECK. WE WILL REPRINT IT AGAIN IN A LATER NEWSLETTER SO YOU WILL HAVE ANOTHER CHANCE TO GET REGISTERED.

ELECTION OF OFFICERS WILL BE HELD AT THE SATURDAY EVENING BUSINESS MEETING. AS YOU KNOW, WE NEEDED TO REPLACE OUR SECRETARY, RITA HUSCHER, AND DONNA CLEWELL HAS AGREED TO ASSUME HER DUTIES. SHE WILL DO A GREAT JOB FOR SOUTH CENTRAL. OFFICERS WILL SERVE A 2-YEAR TERM SO CONSIDER YOUR VOTE CAREFULLY.

THE CURRENT OFFICERS ARE:

TEAM LEADER - CAROLYN VANDEVENTER
SECRETARY - DONNA CLEWELL
TREASURER - JUNE HEAD
NEWSLETTER - NEVA SHAW

NOMINATIONS FOR ANY OR ALL OF THE ABOVE OFFICES WILL BE ACCEPTED AT THE MEETING. IF YOU THINK YOU OR ANYONE YOU KNOW WOULD BE A GOOD OFFICER, YOU WILL BE GIVEN THE OPPORTUNITY TO PRESENT YOUR NOMINATIONS.

DON'T FORGET THE SILENT AUCTION. BE THINKING ABOUT WHAT YOU MIGHT BRING TO THE AUCTION TABLE. AS YOU KNOW THESE FUNDS ARE USED TO REPLENISH OUR TREASURY, BUT ASIDE FROM THAT, IT'S JUST A LOT OF FUN TO TRY TO GET THE LAST BID IN ON THE ITEMS YOU WANT. IT ALWAYS GETS A LITTLE HECTIC RIGHT BEFORE WE SHUT IT DOWN!

ALSO—WE REALLY NEED MORE PARTICIPATION IN THE "ARTIST OF THE YEAR" CONTEST. WE ENCOURAGE YOU TO CHOOSE ONE OF YOUR PAINTINGS TO ENTER IN THE CONTEST THIS YEAR. ANYONE WHO HAS WON A PRIZE IN THE LAST TWO YEARS IS INELIGIBLE THIS YEAR. TEACHERS - ENCOURAGE YOUR STUDENTS TO ENTER ONE OF THEIR PAINTINGS. WE WOULD REALLY LIKE TO SEE A GOOD REPRESENTATION FROM ALL THE MEMBERS.

REGISTRATION FORM

**SOUTH CENTRAL REGIONAL MEETING
MARCH 27-28, 2010**

Please fill out the registration form below and return it to: JUNE HEAD
12341 Wingfoot Drive
Kansas City, Kansas 66109

NAME: _____

ADDRESS: _____

CITY: _____ ST: _____ ZIP: _____

I plan to attend: _____ Saturday _____ Sunday

I enclose:

WORKSHOP FEE	\$100.00
DUES	20.00
TOTAL ENCLOSED	\$120.00

_____ I won't be able to attend but I am enclosing a \$20.00 check for my 2010 dues.

FEES MUST BE PAID PRIOR TO THE MEETING

Please copy this form or clip it out to send it.

"On the floor I am more at ease. I feel nearer, more a part of the painting, since this way I can walk around it, work from the four sides and literally be in the painting." (Jackson Pollock)

